

GSM SIM Server Solution



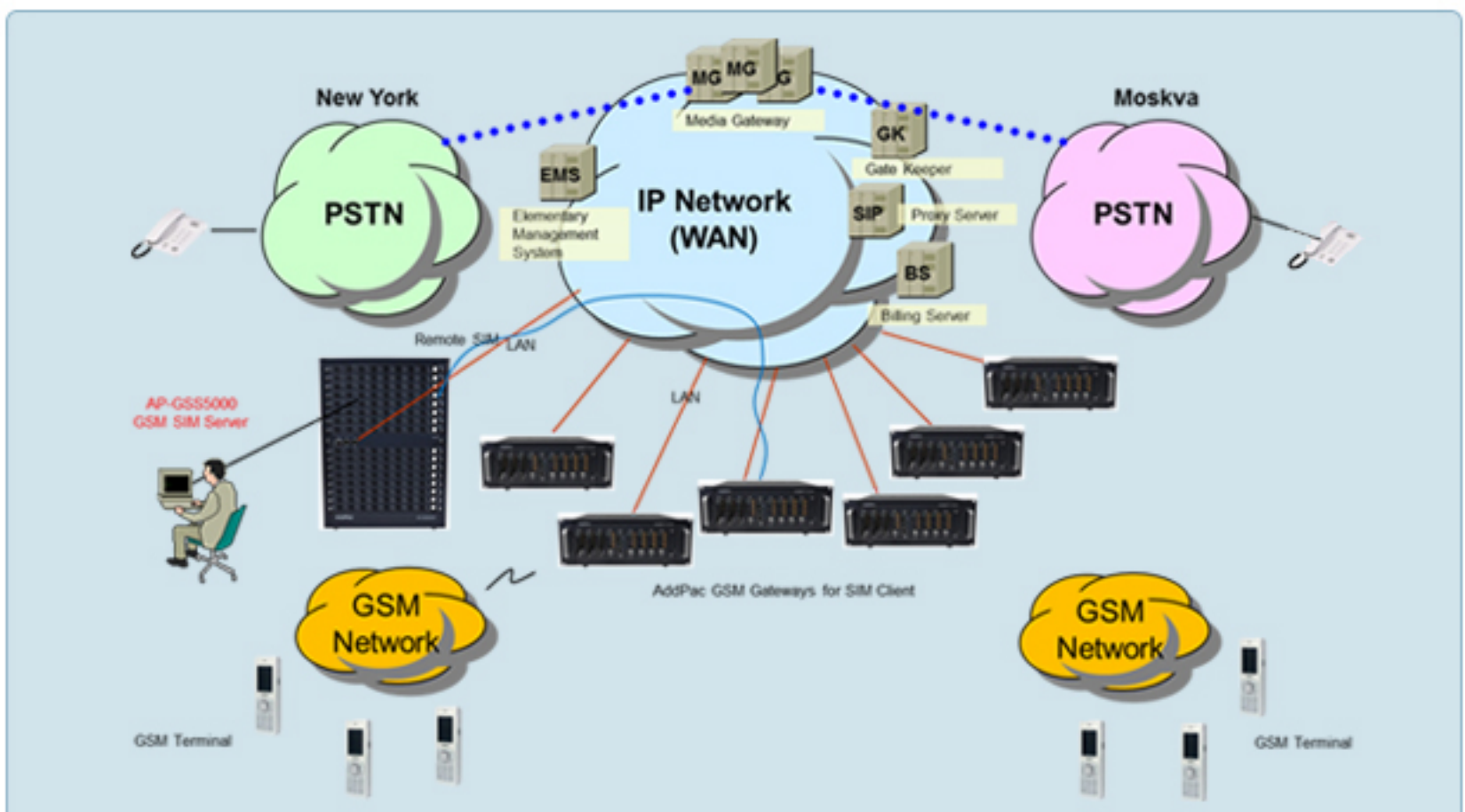
AddPac GSM SIM Server solution provides various GSM based Remote SIM Servers like as AP-GSS5000, AP-GSS3000, AP-GSS2000, AP-GSS1500. This Remote GSM SIM Servers can be installed or operated with AddPac GSM SIM Clients like as AddPac GSM Gateway AP-GS3000, etc. AddPac GSM SIM server combining GSM gateways is now suggesting a new model for a main mobile voice communication solution. In order to be a part of advanced mobile voice communications naturally in the future, making an excellent choice of choosing SIM server with GSM gateway is essential. AddPac AP-GSS5000 is a new cutting edge Tower Type GSM SIM server supporting maximum 512 channel SIM slots. AP-GSS5000 provides an optimized remote SIM bank solution when it interoperates with AddPac GSM gateways. Front SIM card slot design and system architecture of AP-GSS5000 provides customer satisfaction in high quality, performance and system reliance. AddPac AP-GSS5000 is a device that can support remote SIM bank application for centralized management. It also supports sixteen (16) module slots for GSM SIM bank, one(1) module slot for CPU board, two(2) gigabit ethernet ports, 1-port RS232C

console, and state-of-art technologies and services. AddPac AP-GSS5000 is a high-end GSM SIM server providing total 512 SIM interfaces slots.(sixteen(16) module x 32 = 512 channel). A SIM bank module supports 32 front panel type SIM slots. It is suitable for call termination service provider, general enterprises, and large public offices. AddPac AP-GSS3000 is a legacy H/W type Remote SIM server supporting maximum 512 channel SIM slots. AddPac AP-GSS3000 is a mid-range SIM server providing total 512 SIM interfaces slots (sixteen(16) module x 32 = 512 channel). A SIM bank module supports 32 channel SIM slots. It is suitable for general enterprises, medium and large public offices. AddPac AP-GSS2000 is a legacy H/W type Remote SIM server supporting maximum 256 channel SIM slots. AddPac AP-GSS2000 is a mid-range SIM server providing total 256 SIM interfaces slots (octal(8) module x 32 = 256 channel). A SIM bank module supports 32 channel SIM slots. It is suitable for general enterprises, medium and large public offices.

GSM SIM Server Comparison Table

Model	AP-GSS5000	AP-GSS3000	AP-GSS2000	AP-GSS1500
Available Modules	AP-GSC32F AP-CPU AP-POWER	AP-GSC32 AP-CPU AP-POWER	AP-GSC32 AP-CPU	AP-N1-SIM32 AP-CPU
SIM Bank Module	AP-GSC32F : 32 SIM, Front Insertion Type, Single SIM base exchange, Hot-Swap	AP-GSC32 : 32 SIM, Hot-Swap	AP-GSC32 : 32 SIM, Hot-Swap	AP-N1-SIM32: 32 SIM, Hot-Swap
Total SIM Cards	Up to 512 SIM	Up to 512 SIM	Up to 256 SIM	Up to 256 SIM
SIM Bank Module Slot	Sixteen(16) Module Slots for AP-GSC32F	Sixteen(16) Module Slots for AP-GSC32	Octal(8) Module Slots for AP-GSC32	Octal(8) Module Slots for AP-N1-SIM32
LAN Port	2	2	2	2
Console	1	1	1	1
Power	Module Type Single PSU	Module Type Dual PSU	Single PSU	Single PSU

Network Diagram



AddPac Sales & Marketing

Phone +82-2-568-3848(Korea)
Email sales@addpac.com